

# Plan 2208

---



This story and a half home is designed for living. A large front porch is a very inviting place to great guests and hang out for a cup of coffee. Inside is a large open great room and dining room with built in shelves. An adjacent light filled kitchen provides plenty of room to create those gourmet meals. A secluded private master suite includes a five piece bath, and a huge walk in closet!

Upstairs are two additional bedrooms, each with walk in closets, the kids bathroom, and a loft play area for the kids.

BLUE STONE  
design group

[thebluestonedesigngroup.com](http://thebluestonedesigngroup.com)

# Plan 2208

Old Town Series

Two Story  
Main Floor Master  
1,826 finished square feet  
9' Basement  
3 bedrooms  
2.5 baths

Detached Garage  
Opt. Alley Load Attached Garage

## Design Features

Large Front Porch  
Living in Place Design  
All Main Floor Interior Doorways 2'-10"  
3'-6" Wide Hallways  
Basement Construction

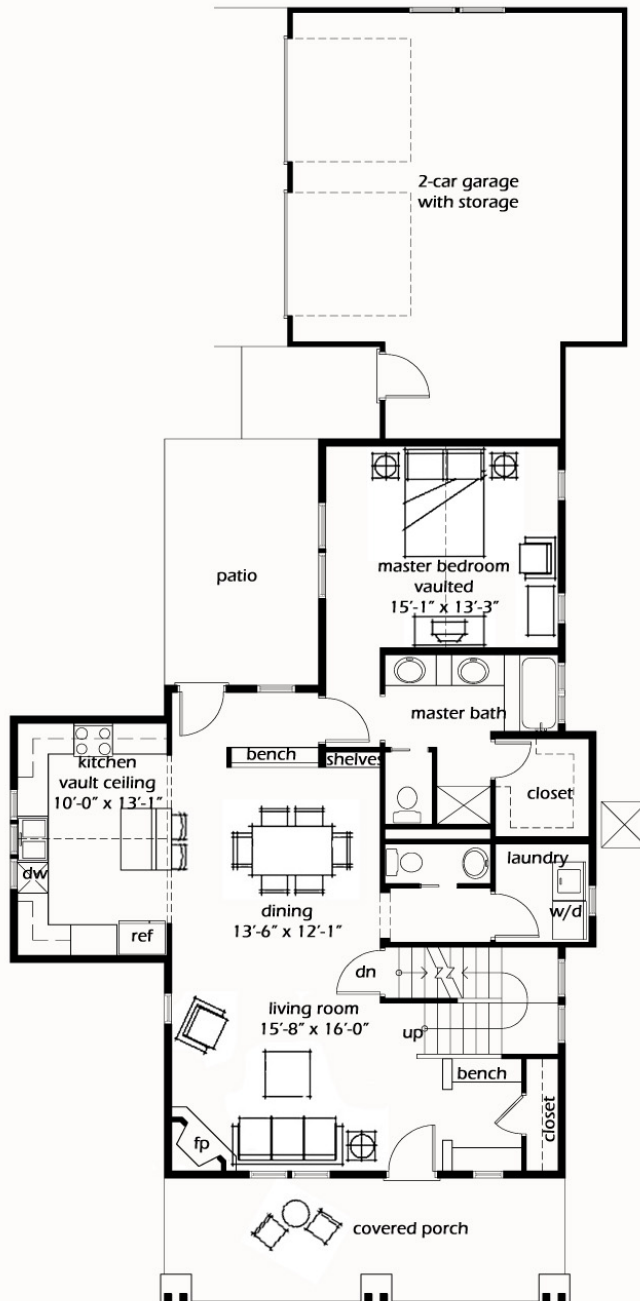
## Energy Features

2x6 Construction  
Energy Trusses  
2' Overhangs  
Small Footprint  
90% Efficient Furnace  
Attic Fan

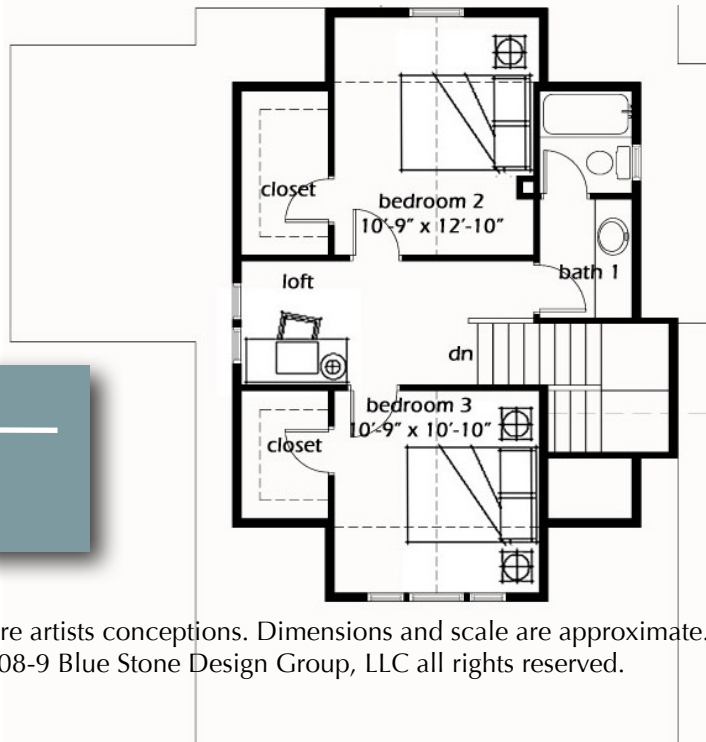
Preliminary

BLUE STONE  
design group

thebluestonedesigngroup.com



Main Level  
1,270 sq. ft.



Second Level  
556 sq. ft.

Illustrations are artists conceptions. Dimensions and scale are approximate.  
© 2008-9 Blue Stone Design Group, LLC all rights reserved.